

# Adult Fine Arts

**Be sure to refer to all applicable state and local rules for every division you enter!**

**Chairperson: David Faust: (661) 992-0256**

**Online Registration Closes: Wednesday, August 31, 2022**

**Entry Fee: \$5.00 per entry**

**Entry Limit: (3) entries per class, (10) total entries per exhibitor**

**Artwork drop-off for ALL Fine Arts Divisions: 2:00 – 7:00 p.m., Saturday, Sept.10.**

**Artwork pick-up for ALL Fine Arts Divisions: 2:00 – 7:00 p.m., Monday, October 3**

**American System of Judging**



## **Fine Arts Rules: NEW RULES, PLEASE NOTE**

1. Entry form and entry fees must be received in the entry office or online by the closing date and time listed above. Late entries will **NOT** be accepted in any way or form.
2. Any artwork not picked up on the designated date will be considered abandoned and are subject to disposal by the chairperson as he/she sees fit.
3. Artwork must have been created within the last (2) two years and not shown at any previous A.V. Fair. All Senior Divisions art must be original in concept. Reference materials may be used, but the direct copying of another's work, or the reworking another's artwork will be immediately rejected. All U.S. Copyright regulations will be enforced. Entry fees for works deemed copies will be forfeit.
4. All entries entered by Junior's and Beginners, Intermediates and ribbon winners will be displayed. Advanced level entries that do not ribbon will be hung depending on space available. The A.V. Fair management reserves the right to select artworks for display. Art showing nudity or in bad taste may be subject to removal. Remember, this is a family event.
5. The Fine Arts Chairperson or Artist Panel may refer artworks to other departments of the Fair. This department is designed for Fine Art only. If a piece of art is transferred, NO refund or adjustment of entry fees will be made.
6. **ALL 2-D ARTWORK MUST HAVE: HANGING WIRE AND EYELETS. (See Attached Guideline Pictures @ the end of this guide). NO Duck Taped Wires or Plastic Hooks with Peel & Stick Tape will be accepted. These do not hold up to the humidity of the building. Alternative treatments will need to be approved by the Chairperson(s). All artwork will be rejected if not in compliance.**
7. All 2-D artwork **must be suitably framed. Example: Canvas with staples showing must be framed. "Perfect wrapped" canvases do not need to be framed but must be painted on the sides.**
8. **Maximum dimensions of 2-D artwork, including framing, MUST NOT exceed 44" in width and 48" in height.** Artworks are hung on pegboard; therefore, heavy pieces will be hung lower on the wall.
9. Sculptures should not normally exceed 50 lbs. or 4'L x 4'W x 6'H including all pieces with multiple parts. Depending on available space, the Chairperson may make exceptions to this rule.
10. Although all reasonable care will be taken in the handling and displaying of artwork, artists are advised to carry insurance on their artwork in case of unexpected damage occurs. Artists are also reminded that the art is hanging in a building with evaporative coolers, and humidity may be an issue. Matted drawings and watercolors in particular may be negatively impacted by the humidity. Make sure art is mounted well with a dustcover to limit warping or other humidity damage.
11. The Antelope Valley Fair reserves the right to add or cancel any division, class or award placements.
12. The Chairperson and/or judges reserve the right to move entries to other classes or divisions if the artist's work has been miss-entered due to experience, quality of work, or incorrect media.

## **American System of Judging for All Adult Fine Arts Divisions including: Beginning, Intermediate, and Advanced, Adult A.V. Fair Theme Art Contest**

The American system uses standards and requirements, it primarily uses the idea of competition between exhibitors, pitting one competitor against another to establish the rankings. Example: In the Olympics, there can only be one gold, silver and bronze. That is the “American system” of awards.

## **Danish System of Judging for Adult Special Citizen Division**

The Danish system is a method of evaluating artwork against a set of standards, and recognition is awarded on the degree to which the standard has been met by each competitor. In Danish system judging, the artists are not judged against each other but against a set of standards in the different mediums used. Examples: Colored pencils, or Acrylics/Oils. The Danish system is a way to provide recognition to greater numbers of youth who may all be making significant progress in their projects. Ribbons traditionally awarded by the Danish system are:

- Blue – for excellence exceeding the standards
- Red – for good work that meets the expected standard
- White – for average work or work that falls below the expected standard

In the Danish method, there is no restriction to the number of each award given. In other words, 1<sup>st</sup>, 2<sup>nd</sup>, and 3<sup>rd</sup> places may not necessarily be evenly distributed amongst entries within a division.

## **Adult Fine Arts Divisions**

Artists enter under only one of the following division categories:

### **Beginner**

Defined as a person who has recently engaged in an event or activity as a pastime rather than a profession. A person who has been working in their particular medium for less than (5) years.

### **Intermediate**

Defined as one whose skills and training are above Beginner Level and has won 2, 1st place in Beginner or one Division winner in Beginner. However, they are not practicing artists and do not engage this work as a livelihood.

### **Professional**

Defined as one whose skills are above Intermediate or has won 2, 1st place in Intermediate or won Division Winner/ Best of Show in Intermediate. One who engages in events or activities for the most part as a livelihood more than a hobby, and/or offers their services as an instructor, judge or demonstrator or is engaged as a professional artist in his or her area of expertise.

### **Special Citizen**

Developmentally challenged adults may enter Division 28 using materials of choice. There is no entry fee required and ribbons will be awarded for first through Honorable Mention. No cash awards will be given.

# Adult Fine Art

**Entry Fee: \$5.00 per entry per class. Limit of three entries per class. Limit of ten entries per artist.**

**Cash awards given per class:** 1st - \$15.00, 2nd - \$10.00, 3rd - \$5.00.

Division Winners: Rosette Ribbon

Best of Show: Rosette Ribbon

## Computer Graphics

Definition: Only original artwork created using a computer application. Computer manipulated photographs must be entered in Photography divisions.

**Division 1 Computer Graphics-Beginner**

**Division 2 Computer Graphics-Intermediate**

**Division 3 Computer Graphics-Advanced**

(Classes are the same for Divisions 1, 2, & 3)

- Classes:
1. Animals – wild or domestic
  2. Landscapes – land as a dominant theme, buildings, seascapes, lakes etc. (water as dominant theme)
  3. Floral – flowers or plants as the dominant subject
  4. Portrait – features of a person or persons as the subject
  5. Nonobjective/Abstract – Non-representational media.
  6. Still life – an inanimate arrangement. Note: All florals must be entered in Class 3.
  7. Miscellaneous – military theme, human interest, or subject that does not meet the criteria of other divisions.
  8. Current Fair Theme

## Oils

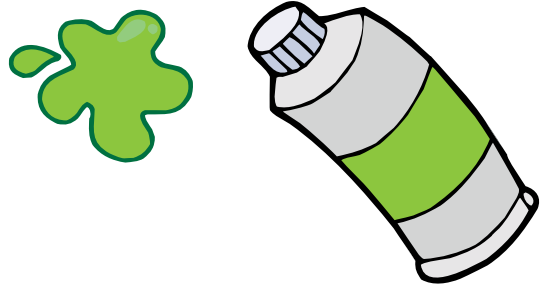
Definition: The use of Oils as medium.

**Division 4 Oils-Beginner**

**Division 5 Oils-Intermediate**

**Division 6 Oils-Advanced**

(Classes are the same for Divisions 4, 5, & 6)



- Classes:
1. Animals – wild or domestic
  2. Landscapes – land as a dominant theme, buildings, seascapes, lakes etc. (water as dominant theme)
  3. Floral – flowers or plants as the dominant subject
  4. Portrait – features of a person or persons as the subject
  5. Nonobjective/Abstract – Non-representational media
  6. Still life – an inanimate arrangement. Note: All florals must be entered in Class 3.
  7. Miscellaneous – military theme, human interest, or subject that does not meet the criteria of other divisions.
  8. Current Fair Theme

## Acrylic and Gouache

Definition: The use of acrylics or gouache as medium.

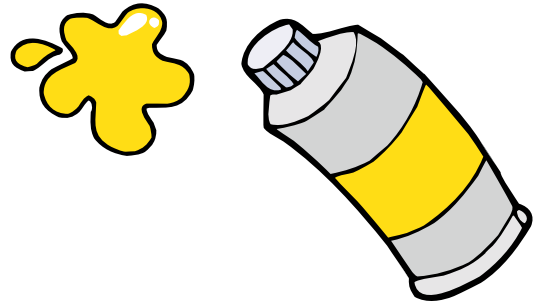
### Division 7 Acrylic-Beginner

### Division 8 Acrylic-Intermediate

### Division 9 Acrylic-Advanced

(Classes are the same for Divisions 7, 8, & 9)

- Classes:
1. Animals – wild or domestic
  2. Landscapes – land as a dominant theme, buildings, seascapes, lakes etc.  
(water as dominant theme)
  3. Floral – flowers or plants as the dominant subject
  4. Portrait – features of a person or persons as the subject
  5. Nonobjective/Abstract – Non-representational media
  6. Still life – an inanimate arrangement. Note: All florals must be entered in Class 3.
  7. Miscellaneous – military theme, human interest, or subject that does not meet the criteria of other divisions.
  8. Current Fair Theme



## Pastel and Color Pencil

Definition: The use of oil/chalk pastels or colored pencils as medium.

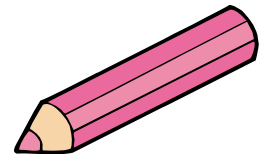
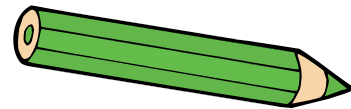
### Division 10 Pastel or Color Pencil-Beginner

### Division 11 Pastel and Color Pencil-Intermediate

### Division 12 Pastel or Color Pencil-Advanced

(Classes are the same for Divisions 10, 11, & 12)

- Classes:
1. Animals – wild or domestic
  2. Landscapes – land as a dominant theme, buildings, seascapes, lakes etc.  
(water as dominant theme)
  3. Floral – flowers or plants as the dominant subject
  4. Portrait – features of a person or persons as the subject
  5. Nonobjective/Abstract – Non-representational media
  6. Still life – an inanimate arrangement. Note: All florals must be entered in Class 3.
  7. Miscellaneous – military theme, human interest, or subject that does not meet the criteria of other divisions.
  8. Current Fair Theme



## Watercolors

Definition: The use of watercolors as medium.

### Division 13 Watercolors-Beginner

### Division 14 Watercolors-Intermediate

### Division 15 Watercolors-Advanced

(Classes are the same for Divisions 13, 14, & 15)

Classes: 1. Animals – wild or domestic

2. Landscapes – land as a dominant theme, buildings, seascapes, lakes etc. (water as dominant theme)
3. Floral – flowers or plants as the dominant subject
4. Portrait – features of a person or persons as the subject
5. Nonobjective/Abstract – Non-representational media
6. Still life – an inanimate arrangement. Note: All florals must be entered in Class 3.
7. Coffee Paintings all subjects
8. Miscellaneous – military theme, human interest, or subject that does not meet the criteria of other divisions.
9. Current Fair Theme



## Pen and Ink

Definition: The use of pen and ink or scratchboard as medium.

**Division 16 Pen and Ink-Beginner**

**Division 17 Pen and Ink-Intermediate**

**Division 18 Pen and Ink-Advanced**

(Classes are the same for Divisions 16, 17, & 18)

Classes: 1. Animals – wild or domestic

2. Landscapes – land as a dominant theme, buildings, seascapes, lakes etc. (water as dominant theme)
3. Floral – flowers or plants as the dominant subject
4. Portrait – features of a person or persons as the subject
5. Nonobjective/Abstract – Non-representational media
6. Still life – an inanimate arrangement. Note: All florals must be entered in Class 3.
7. Miscellaneous – military theme, human interest, or subject that does not meet the criteria of other divisions.
8. Current Fair Theme



## Graphite and Charcoal

Definition: The use of graphite pencil or charcoal as medium.

**Division 19 Graphite and Charcoal-Beginner**

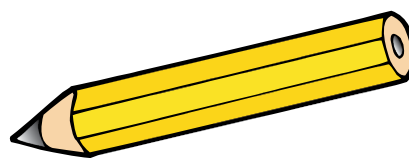
**Division 20 Graphite and Charcoal-Intermediate**

**Division 21 Graphite and Charcoal-Advanced**

(Classes are the same for Divisions 19, 20, & 21)

Classes: 1. Animals – wild or domestic

2. Landscapes – land as a dominant theme, buildings, seascapes, lakes etc. (water as dominant theme)
3. Floral – flowers or plants as the dominant subject
4. Portrait – features of a person or persons as the subject
5. Nonobjective/Abstract – Non-representational media
6. Still life – an inanimate arrangement. Note: All florals must be entered in **Class 3**.
7. Miscellaneous – military theme, human interest, or subject that does not meet the criteria of other divisions.
8. Current Fair Theme



## Mixed Media

Definition: The use of a combination of any two, or more media.

### **Division 22 Mixed Media-Beginner**

### **Division 23 Mixed Media-Intermediate**

### **Division 24 Mixed Media-Advanced**

(Classes are the same for Divisions 22, 23, & 24)

- Classes:
1. Animals – wild or domestic
  2. Landscapes – land as a dominant theme, buildings, seascapes, lakes etc. (water as dominant theme)
  3. Floral – flowers or plants as the dominant subject
  4. Portrait – features of a person or persons as the subject
  5. Nonobjective/Abstract – Non-representational media
  6. Still life – an inanimate arrangement. Note: All florals must be entered in Class 3.
  7. Miscellaneous – military theme, human interest, or subject that does not meet the criteria of other divisions.
  8. Current Fair Theme

## Sculpture

Definition: The creation of 3-D artwork using a variety of materials or media.

### **Division 25 Sculpture-Beginner**

### **Division 26 Sculpture-Intermediate**

### **Division 27 Sculpture-Advanced**

(Classes are the same for Divisions 25, 26, & 27)

- Classes:
1. Carved wood or stone
  2. Poured bronze or other metal
  3. Metal sculpture
  4. Free Hand, Plasma Metal Cutting Art
  5. Clay or other materials (please specify on entry form)
  6. Glass Fused, Slumped or Draped Bowls/Vases
  7. Glass Fused, Slumped or Draped Tiles/Wall Art
  8. Glass Fused, Slumped or Draped Plates/Platters
  9. Glass Fused, Slumped or Draped Miscellaneous
  10. Current Fair theme

## Special Citizen

### **Division 28 SPECIAL CITIZEN ADULT FINE ARTS**

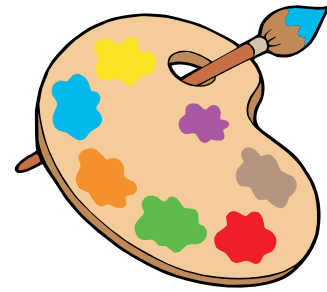
**All Mediums. Entry Fee: None. Danish system of judging.**

Ribbons for 1st through 3rd, Honorable Mention,

- Classes:
1. Animals – wild or domestic
  2. Landscapes – land as a dominant theme, buildings, seascapes, lakes etc. (water as dominant theme)
  3. Floral – flowers or plants as the dominant subject
  4. Portrait – features of a person or persons as the subject
  5. Nonobjective/Abstract – Non-representational media
  6. Still life – an inanimate arrangement. Note: All florals must be entered in Class 3.
  7. Miscellaneous – military theme, human interest, or subject that does not meet the criteria of other divisions.
  8. Current Fair Theme

# China Painting

**Chairperson: David Faust: 661-992-0256**



**Entry Registration Closes: Wednesday, August 31, 2022**

**Entry Limit: (3) entries per class, (10) total entries per exhibitor**

**Artwork drop-off for ALL Fine Arts Divisions: 2:00 – 7:00 p.m., Saturday, September 10, 2022**

**Artwork pick-up for ALL Fine Arts Divisions: 2:00 – 7:00 p.m., Monday, October 3, 2022,  
American System of Judging**

**Entry Fee: \$5.00 per entry per class. Limit of three entries per class. Limit of ten entries per artist.**

(Jewelry class may have two (2) earrings count as one (1) entry only)

**Cash awards given per class: 1st - \$15.00, 2nd - \$10.00, 3rd - \$5.00.**

Division Winners: Rosette Ribbon

China Painting Best of Show: Rosette Ribbon

## **Fine Arts Committee Award**

**Awarded by the Art Panel for the entry that best represents the talents of our local artists.**

## **China Painting Guidelines and Information**

Jewelry class may have two (2) earrings count as one (1) entry. Lamps will be lighted for display during the Fair. Artist must supply own stand for platter and plate entries.

## **China Painting Divisions**

**Division 29 China Painting-Beginner**

**Division 30 China Painting-Intermediate**

**Division 31 China Painting-Advanced**

(Classes are the same for Divisions 29, 30, & 31)

- Classes:
1. Bowls
  2. Boxes
  3. Glasses
  4. Jewelry
  5. Lamps
  6. Pitchers/Pots
  7. Platters/Plates
  8. Tiles
  9. Miscellaneous
  10. Current Fair Them

# Junior Fine Arts

**Chairperson: David Faust: 661-992-0256**

**Online Entry Registration Closes: Wednesday, August 31, 2022**

**Artwork drop-off for ALL Fine Arts Divisions: 2:00 – 7:00 p.m., Saturday, September 10**

**Artwork pick-up for ALL Fine Arts Divisions: 2:00 – 7:00 p.m., Monday, October 3**

**American System of Judging**

**Entry Fee: \$2.00 per entry per class. Limit of three entries per class. Limit of ten entries per artist. Cash awards and ribbons given per class: 1st - \$3.00, 2nd - \$2.00, 3rd - \$1.00 Division Winners: Rosette Ribbon, Best of Show: Rosette Ribbon**

**RULES: Same as Adult Rules**

## Junior Fine Art Divisions

12 years and under is Judged by Danish System of Judging

13 – 17 years old are judged by American System of Judging

**Division 32 Jr Fine Arts: Ages 5 & Under**

**Division 33 Jr Fine Arts: Ages 6 to 8 yrs.**

**(Classes are the same for Division 32 & 33)**

1. Acrylic/Oils
3. Pastel
4. Tempera Paint
5. Finger-paint
6. Pencil/Charcoal
7. Color Markers
8. Pen & Ink/Scratchboard
9. Watercolors
10. Mixed Media
11. Sculpture
12. Computer Graphics
13. Current Fair Theme

**Division 34 Jr Fine Arts: Ages 9 to 12 yrs.**

**Division 35 Jr Fine Arts: Ages 13 to 17 yrs.**

**(Classes are the same for Division 34 & 35)**

1. Acrylic/Oils
2. Colored Pencil/Crayon
2. Colored Pencil/Crayon
3. Pastel
4. Computer Graphics
5. Pencil/Charcoal
6. Color Markers
7. Pen & Ink/Scratchboard
8. Watercolors
9. Mixed Media
10. Sculpture
11. Coffee mediums
12. Current Fair Theme

## Junior Special Citizen

**Entry Fee: None**

**Danish System of Judging**

The developmentally challenged may enter Division 36 using materials of choice.

No cash awards will be given

Ribbons 1st through 3rd

Honorable Mention: Ribbons

**Division 36 Jr Special Citizen Fine Arts**

All Mediums

Class:

1. Acrylic/Oils
2. Colored Pencil/Crayon
3. Pastel
4. Tempera Paint
5. Finger-paint
6. Pencil/Charcoal
7. Color Makers
8. Pen & Ink/ Scratchboard
9. Watercolor
10. Mixed Media
11. Sculpture
12. Computer Graphics
13. Current Fair Theme



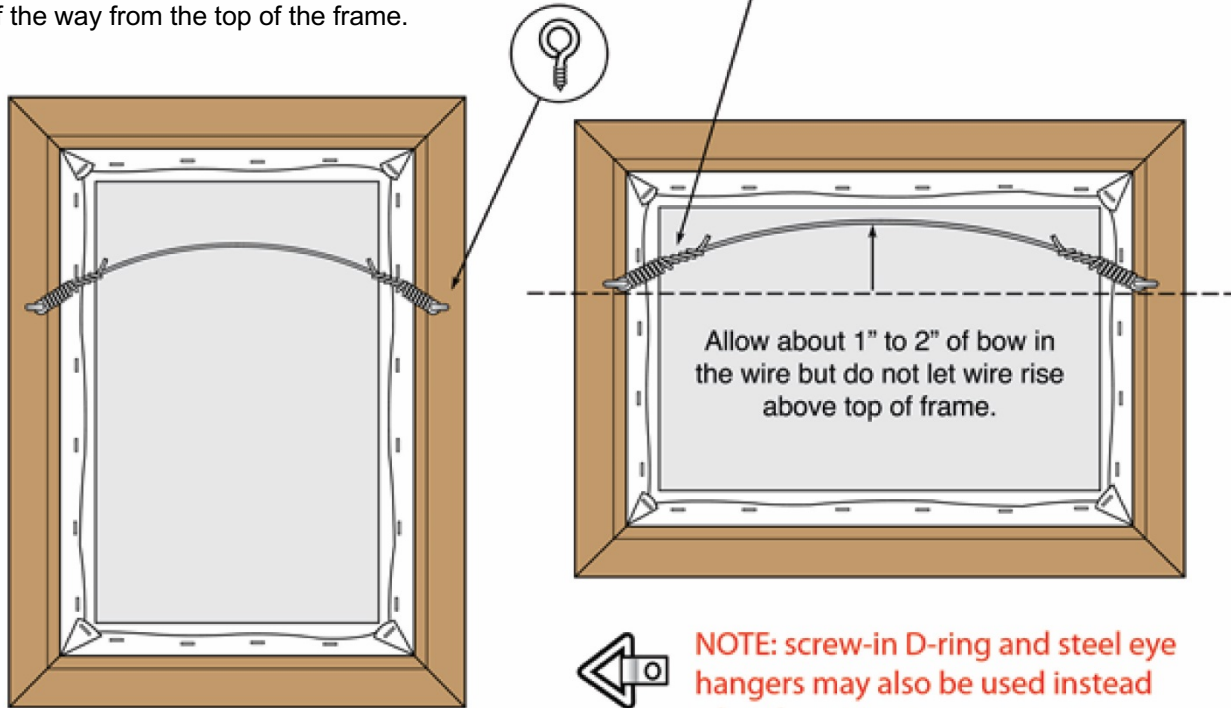
# Art wiring guidelines

## Acceptable wiring of art

Use standard hanging wire found at any art supply or framing store with eyelet screws. Mount eyelet screws at about 1/3 of the way from the top of the frame.

**Eyelet screw**

Loop your wire through the eyelet twice then tightly wrap at least six times around itself and clip off excess wire.



## Unacceptable wiring of art

Do not wire painting at top of frame. The exposed wire looks bad and interferes with the spacing and hanging of other entries. Sawtooth or pre-installed hooks found on many store frames are not acceptable. Artwork can slip from the hooks

we use and fall. If your frame comes with one of these, please remove if possible, and install new eyelet screws and wire as shown above.

